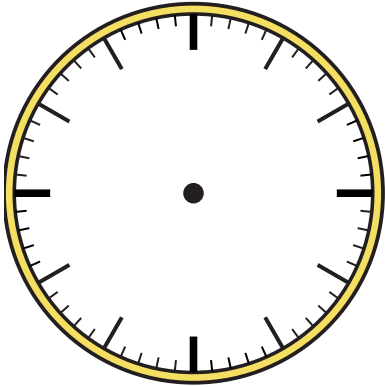


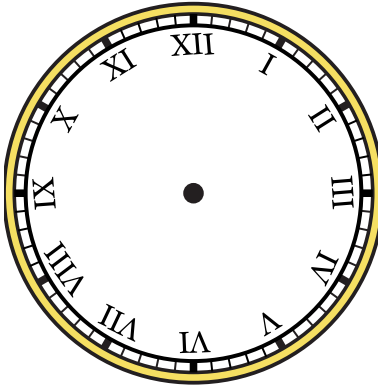


Draw the hour and minute hand on the clock so it represents the time shown.

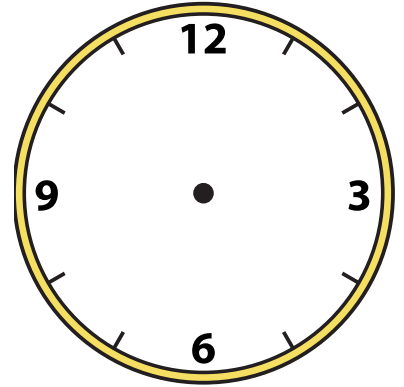
1) 9:45



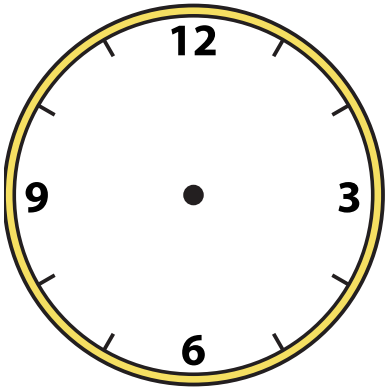
2) 6:45



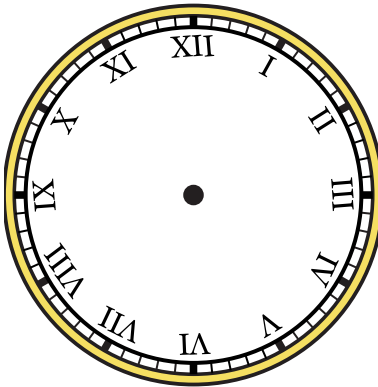
3) 5:00



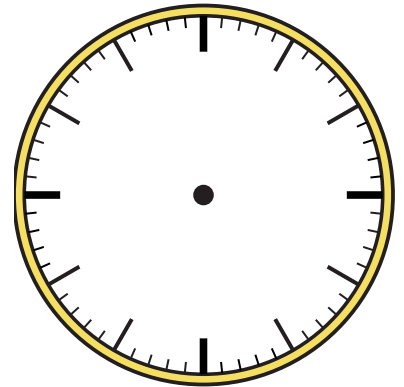
4) 4:45



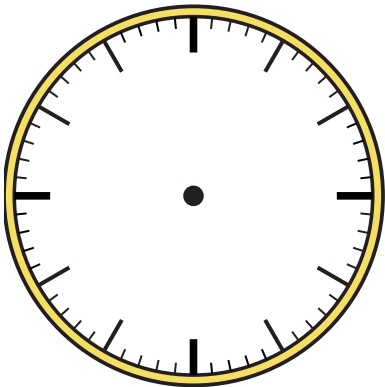
5) 8:30



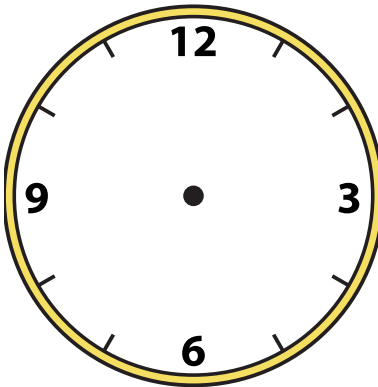
6) 12:30



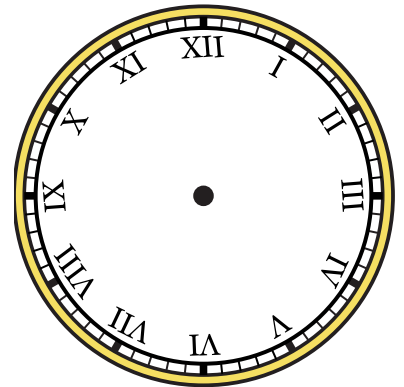
7) 12:15



8) 5:15



9) 1:00



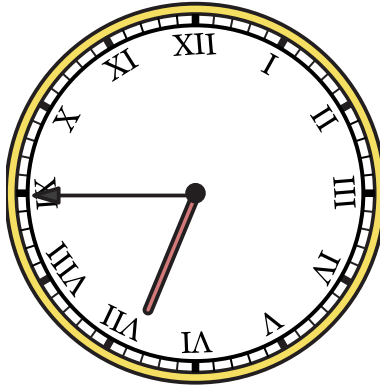


Draw the hour and minute hand on the clock so it represents the time shown.

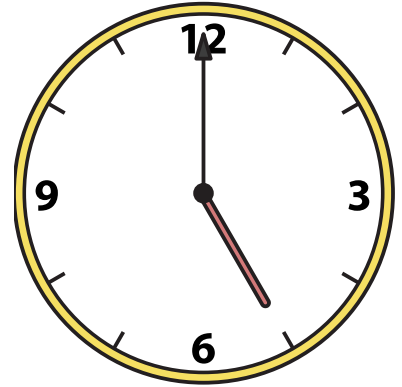
1) 9:45



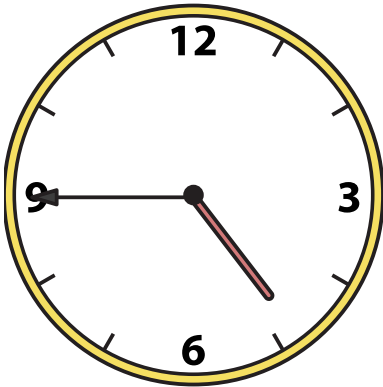
2) 6:45



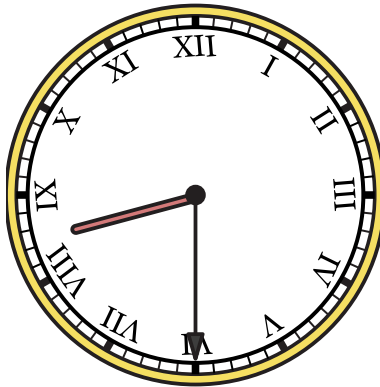
3) 5:00



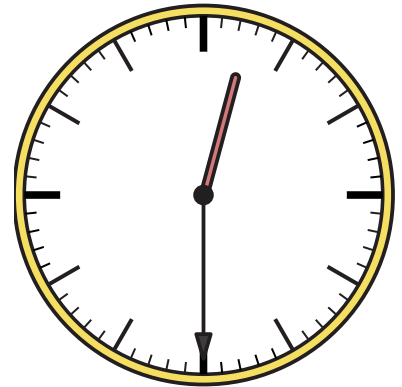
4) 4:45



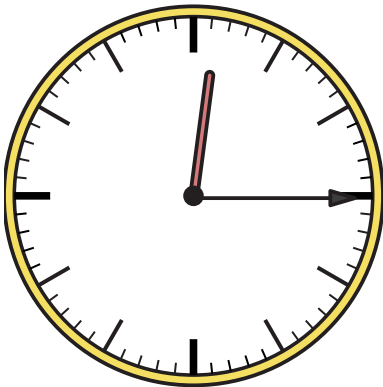
5) 8:30



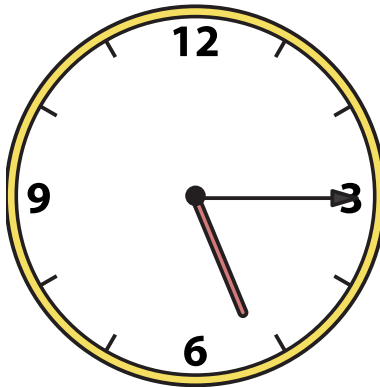
6) 12:30



7) 12:15



8) 5:15



9) 1:00

