



Draw the hour and minute hand on the clock so it represents the time shown.

1) 10:02



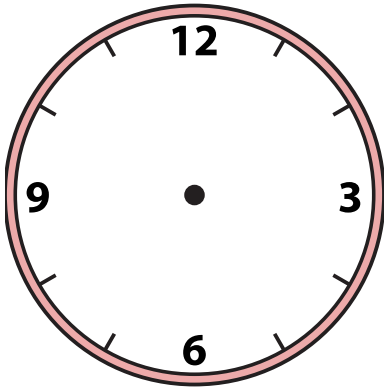
2) 11:19



3) 9:17



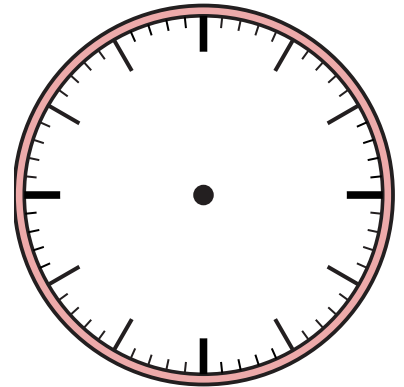
4) 3:40



5) 1:47



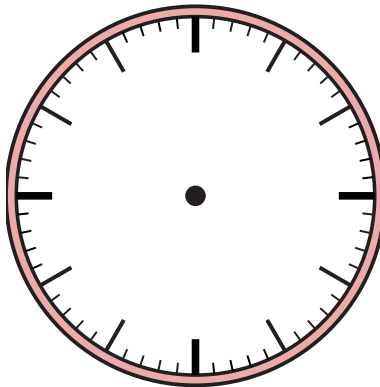
6) 12:59



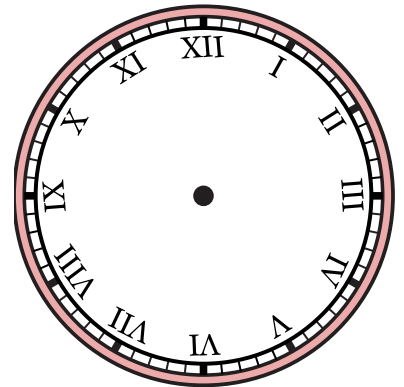
7) 8:50



8) 3:45



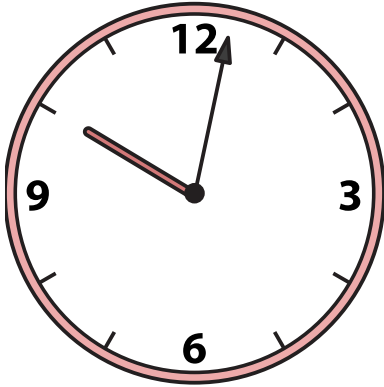
9) 3:25



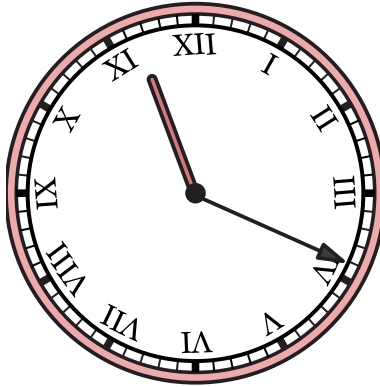


Draw the hour and minute hand on the clock so it represents the time shown.

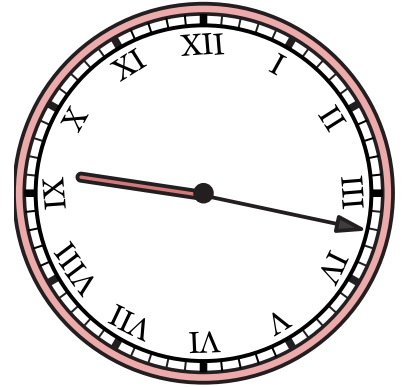
1) 10:02



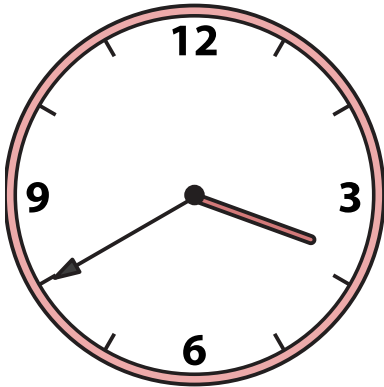
2) 11:19



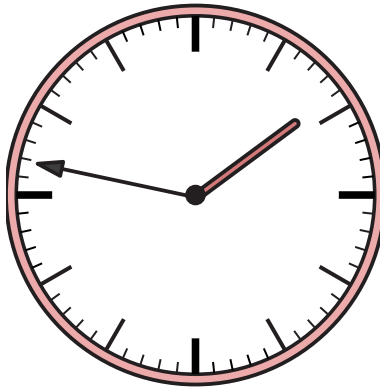
3) 9:17



4) 3:40



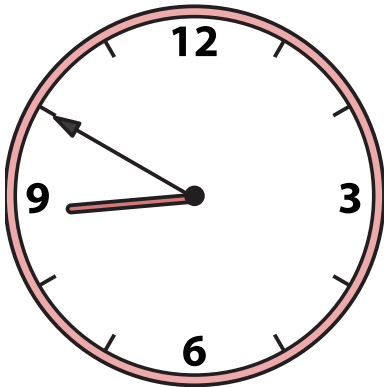
5) 1:47



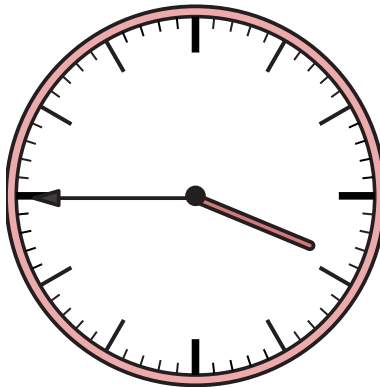
6) 12:59



7) 8:50



8) 3:45



9) 3:25

