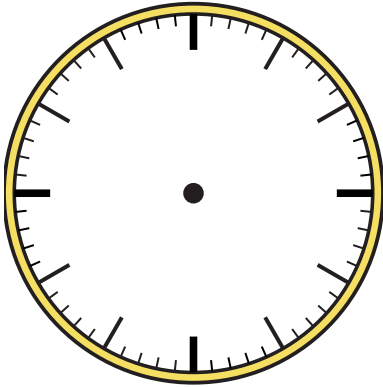


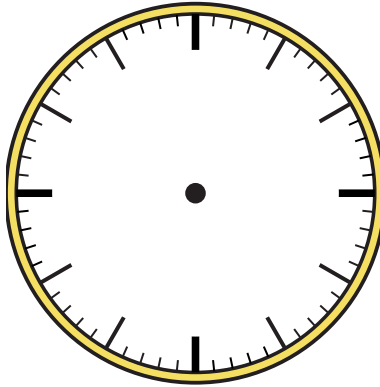


Draw the hour and minute hand on the clock so it represents the time shown.

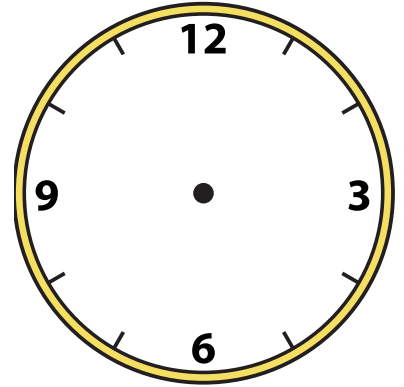
1) 11:55



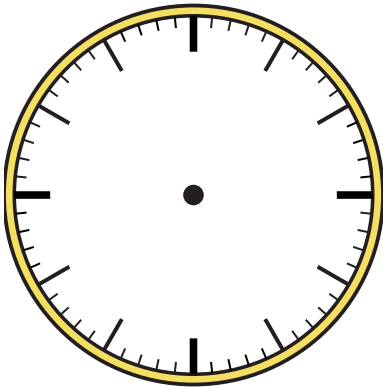
2) 7:15



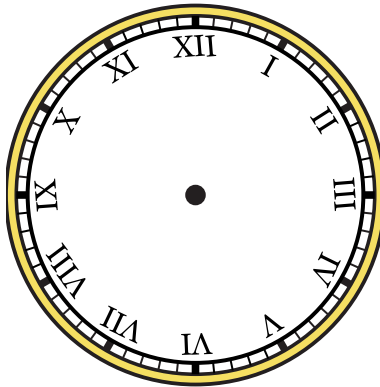
3) 8:15



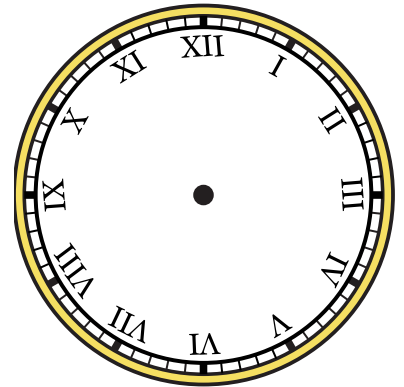
4) 10:15



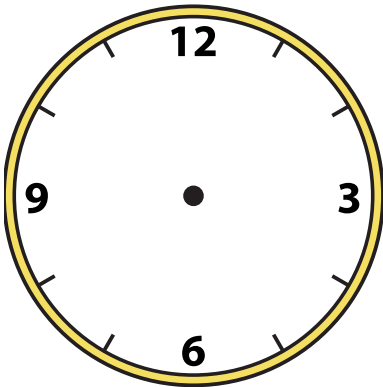
5) 8:25



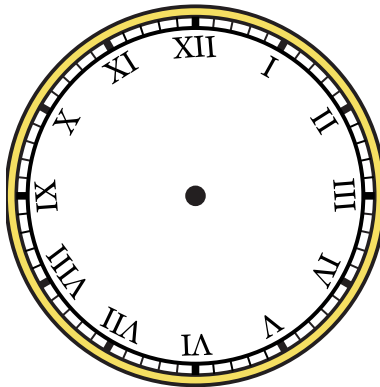
6) 2:05



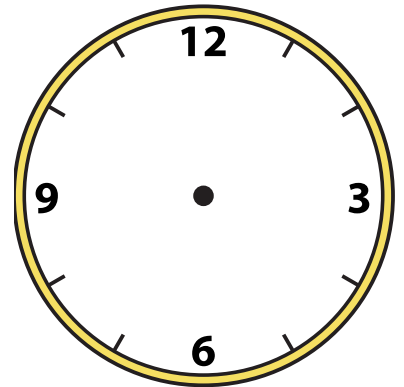
7) 12:40



8) 4:15



9) 12:50



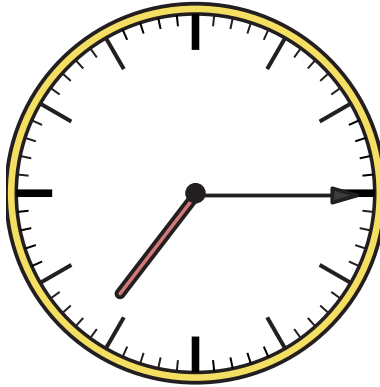


Draw the hour and minute hand on the clock so it represents the time shown.

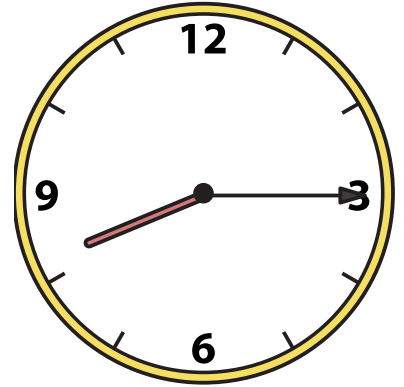
1) 11:55



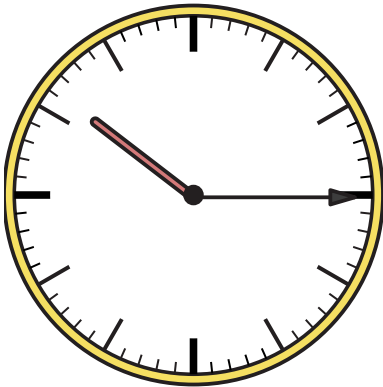
2) 7:15



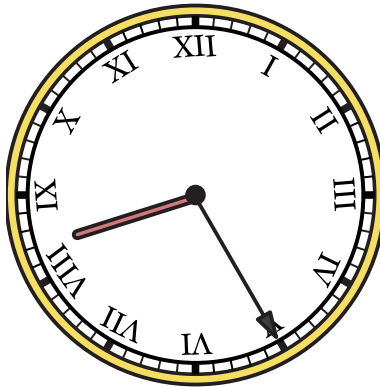
3) 8:15



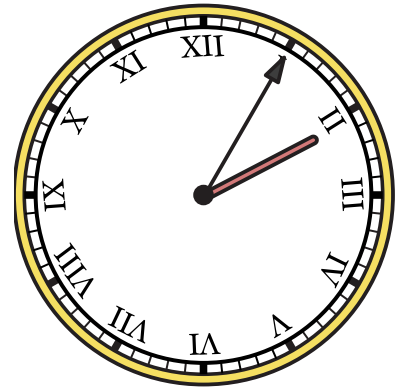
4) 10:15



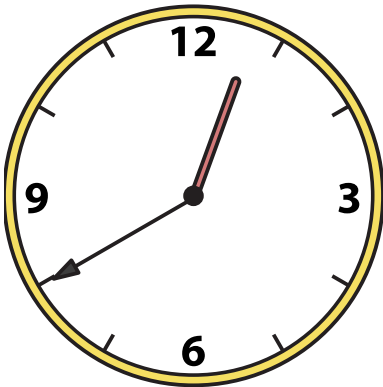
5) 8:25



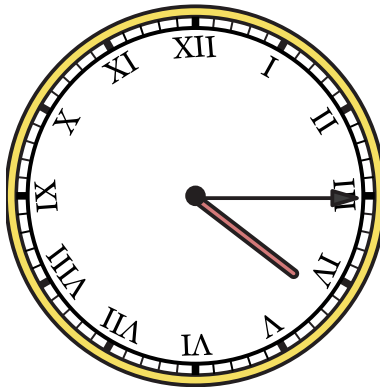
6) 2:05



7) 12:40



8) 4:15



9) 12:50

